

QUICK START USER GUIDE



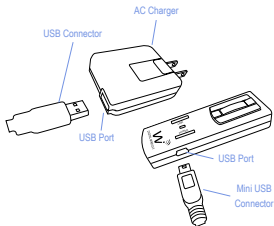
Wi AudioLink™ Pro



www.widigitalsystems.com

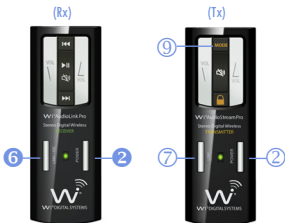
Charging

1. Plug the AC Charger into a power socket.
2. Connect the USB Y-Split power cable to the USB port on the AC Charger.
3. Connect one of the two mini USB connectors into the transmitter USB port.
4. Connect the second mini USB connector into the receiver USB port.
5. The Power/Status LED will turn to solid Red ON.
6. When charging is complete the Red LED will turn OFF.
7. Remove the charging cable and the AC Charger and store in the carrying case. The battery will last 4 to 6 hours of continuous operation.



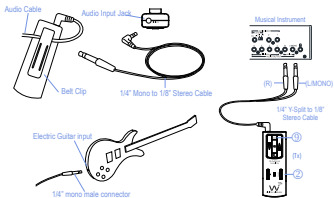
Pairing (Only If Needed)

1. First turn ON the transmitter (Tx) and the receiver (Rx) units by pressing and holding the POWER button ②, ② on each of the units for 2 seconds.
2. Press and hold the LINK button ⑦ on the transmitter (Tx) for 3 seconds. The Power/Status LED on the transmitter will start fast flashing. The transmitter is now in a Pairing mode and ready to search for the receiver.
3. Press and hold the LINK button ⑥ on the receiver (Rx) for 3 seconds. The Power/Status LED on the receiver will start fast flashing. The receiver is now in a Pairing mode and ready to be found by the transmitter.
4. Once the transmitter links with the receiver the Power/Status LED on both devices will turn to solid Green.



Transmitter Connection

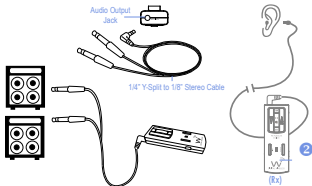
1. Connect the 1/8" stereo male end of the cable into the "Audio Input" jack on the transmitter.
2. Route the audio cable beneath the belt clip as shown to prevent accidental disconnection of the cable.
3. Connect the 1/4" mono male end of the cable into the electric guitar. Use the 1/4" stereo cable for digital piano, keyboard or electronic drums connection.
4. Power up the transmitter by pressing and holding the POWER button **2** for 2 seconds.
5. *Please refer to the "Transmitter Button Function Matrix" section of this Quick Guide for Active Guitars and Stereo Line-in MODE **9** settings.*
6. Attach the transmitter to your belt. Alternatively the receiver can be placed next to the musical instrument.



Receiver Connection

PLEASE PROTECT YOUR EARS! Prolonged use of headphones or In-Ear personal monitors at high volumes may affect your hearing capacity or may result in noise induced hearing loss (NHL).

1. Connect the 1/8" stereo end of the cable into the "Audio Input" jack on the receiver.
2. Route the audio cable beneath the belt clip as shown to prevent accidental disconnection of the cable.
3. Connect the 1/4" male end of the cable to the inputs of your amplifier, powered monitor, sound system, mixer or foot pedal. Use the L/MONO and R jacks on your gear when using the system in stereo.
4. Power up the receiver by pressing and holding the POWER button **2** for 2 seconds.
5. Attach the receiver to your belt. Alternatively the receiver can be placed next to the mixer, amp, foot pedal or stomp box.



QUICK START USER GUIDE



Wi TM DIGITAL SYSTEMS

The Sound of Digital Wireless Innovation

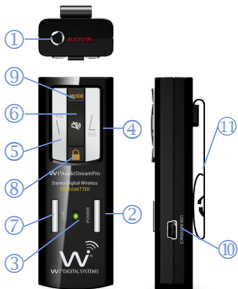
© 2013 Wi Digital Systems, Inc. All rights reserved. Stylized Wi logo is a registered trademark of Wi Digital Systems, Inc. in the United States and may be a registered trademark in other countries. Wi, Digital Wireless Stereo logos and Wi AudioLink, Wi Sure-Ears, Wi Micro-In-Ear are trademarks of Wi Digital Systems, Inc. All other trademarks included herein are the property of their respective owners. US and Foreign Patents Pending.

(Design and specifications subject to change without notice).

www.widigitalsystems.com

Wi Transmitter

1. Audio IN Jack
2. Power ON/OFF
3. Power/Status LED
4. Volume UP
5. Volume Down
6. Mute
7. Link/Pairing
8. Lock
9. Operation Mode
10. USB Audio Interface & Charging Port
11. Belt Clip



Transmitter Button Function

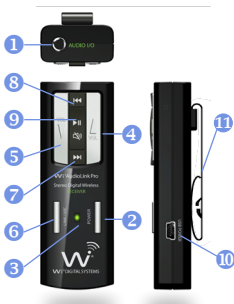
Function	Button	Hold	LED Status
Power ON/OFF	POWER	2 sec	Solid Green
Pairing Mode	LINK	3 sec	Fast Green Flash
Volume UP		Click	
Volume Down			
Mute ON/OFF		1.5sec	Solid Green & Blue
Lock Keypad		2 sec	Solid Green Only
Unlock Keypad		Click	Solid Green & Blue Flashes
Mono Preamp	MODE	2 sec	Solid Green & Slow Blue LED Flashes
Mono Line-In	MODE	2 sec	Solid Green & Fast Blue LED Flashes
Stereo Line-In	MODE	2 sec	Solid Green & Two Blue LED Flashes

Transmitter LED Indicator

Function	LED Status
Searching For Receiver	③ Flashing Green
Linked to Receiver	③ Solid Green
Lock Keypad	③ Solid Green Only
Low Battery	③ Solid Green & Flashing Red
Charging With Power OFF	③ Solid Red
Charging With Power ON	③ Solid Red & Green
Charging Complete	③ Red OFF





Wi Receiver

1. Audio OUT Jack
2. Power ON/OFF
3. Power/Status LED
4. Volume UP
5. Volume Down
6. Link/MIC
7. Next Track
8. Previous Track
9. Mute/ Play/Pause
10. USB Charging Port
11. Belt Clip



*Functions are activated when Transmitter is connected to a USB Port

Receiver Button Function

Function	Button	Hold	LED Status
Power ON/OFF	POWER	2 sec	Solid Green
Pairing Mode	LINK	3 sec	Fast Green Flash
MIC On/Off	MIC	Click	2 Blue LED Flashes / Solid Green LED
Volume UP Volume Down		Click	
Mute ON/OFF		1.5 sec	Solid Green & Blue
Play/Pause	* 	Click	
Next Track	* 	Click	
Prev Track	* 	Click	

Receiver LED Indicator

Function	LED Status
Searching For Transmitter	③ Flashing Green
Linked to Transmitter	③ Solid Green
Lock (Activated By Tx)	③ Solid Green
Low Battery	③ Solid Green & Flashing Red
Charging With Power OFF	③ Solid Red
Charging With Power ON	③ Solid Red & Green
Charging Complete	③ Red OFF