

Professional Digital Mixer and Controller

MC6000MK2 Quick Setup Guide

About the Quick Setup Guide

This Quick Setup Guide explains the setup procedure for how to connect the MC6000MK2 to a computer, and set up the system so that DJ software can be operated.

When using the MC6000MK2, refer to the Owner's Manual and DJ software instruction manual.

Informationen zur Schnell-Installationsanleitung

Diese Schnell-Installationsanleitung erläutert das Anschließen des MC6000MK2 an einen Computer und die Einrichtung des Systems, sodass die DJ-Software verwendet werden kann.

Beachten Sie bei der Verwendung des MC6000MK2 die Bedienungsanleitung und die Anleitung der DJ-Software.

À propos du Guide de configuration rapide

Le Guide de configuration rapide explique la procédure de configuration, notamment comment connecter le MC6000MK2 à un ordinateur et configurer le système de façon à pouvoir utiliser le logiciel DJ.

Pour l'utilisation du MC6000MK2, reportez-vous au Manuel de l'Utilisateur et au manuel d'utilisation du logiciel DJ.

Informazioni sulla Guida di installazione rapida

Questa Guida di installazione rapida illustra la procedura di installazione per la connessione di MC6000MK2 a un computer e la configurazione del sistema per l'utilizzo del software DJ.

Quando si utilizza MC6000MK2, fare riferimento al documento Manuale delle istruzioni e al manuale di istruzioni del software DJ.

Acerca de la Guía de instalación rápida

Esta Guía de instalación rápida explica el procedimiento de instalación para la conexión del MC6000MK2 a un ordenador y la configuración del sistema para que se pueda utilizar el software de DJ.

Cuando utilice el MC6000MK2, consulte el Manual del usuario y el manual de instrucciones del software de DJ.

Om snabbinstallationsguiden

I denna snabbinstallationsguide förklaras inställningsproceduren för hur man ansluter MC6000MK2 till en dator, och ställer in systemet så att DJ-programvara kan användas.

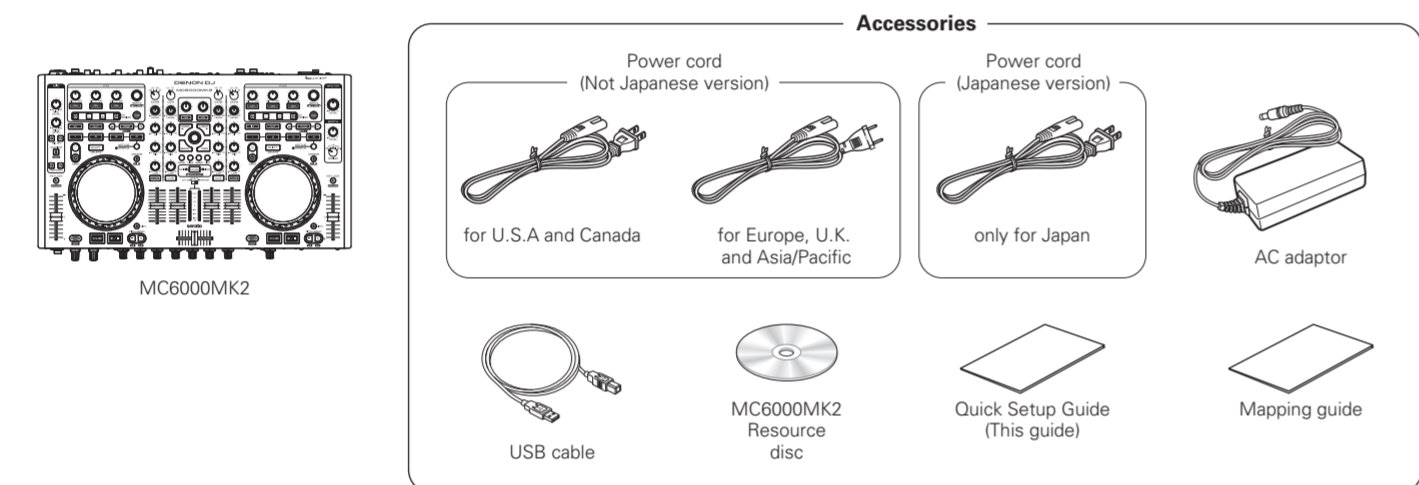
När du använder MC6000MK2, se Bruksanvisning och DJ-programvarans instruktionsmanual.

クイックセットアップガイドについて

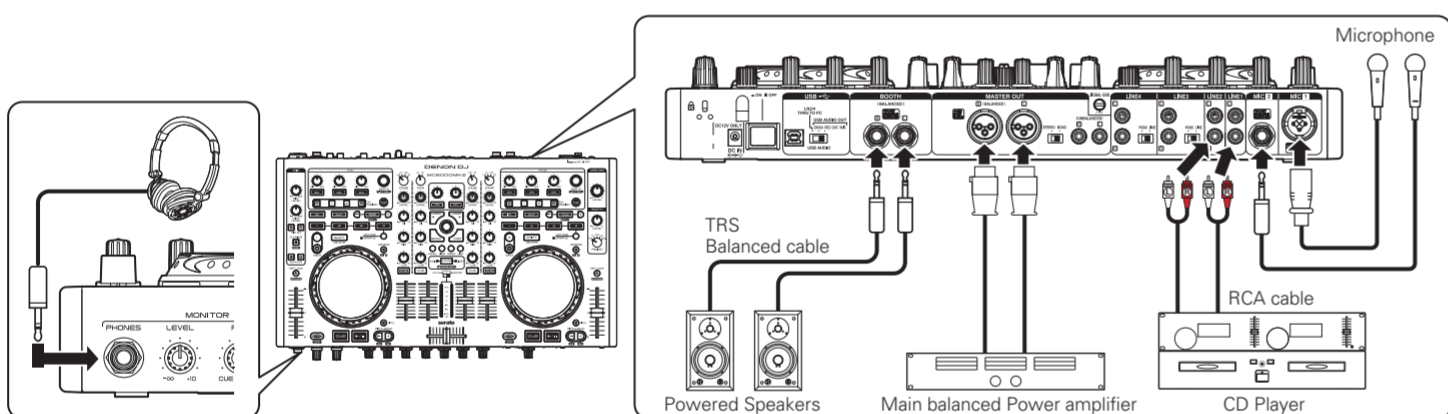
このクイックセットアップガイドでは、本機をパソコンに接続してDJソフトウェアの操作ができるようにセットアップする手順を説明しています。

本機をご使用になるときは、取扱説明書およびDJソフトウェアの取扱説明書をご覧ください。

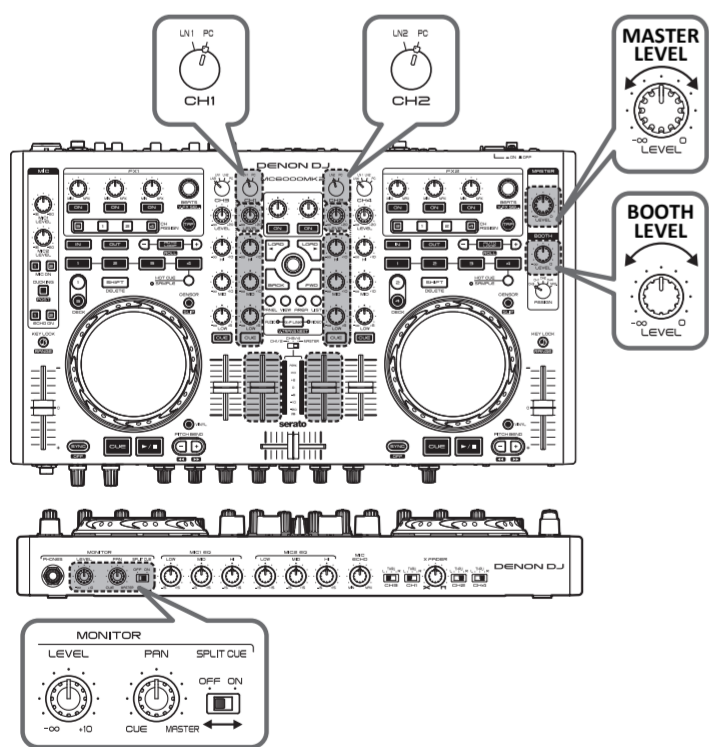
Check contents



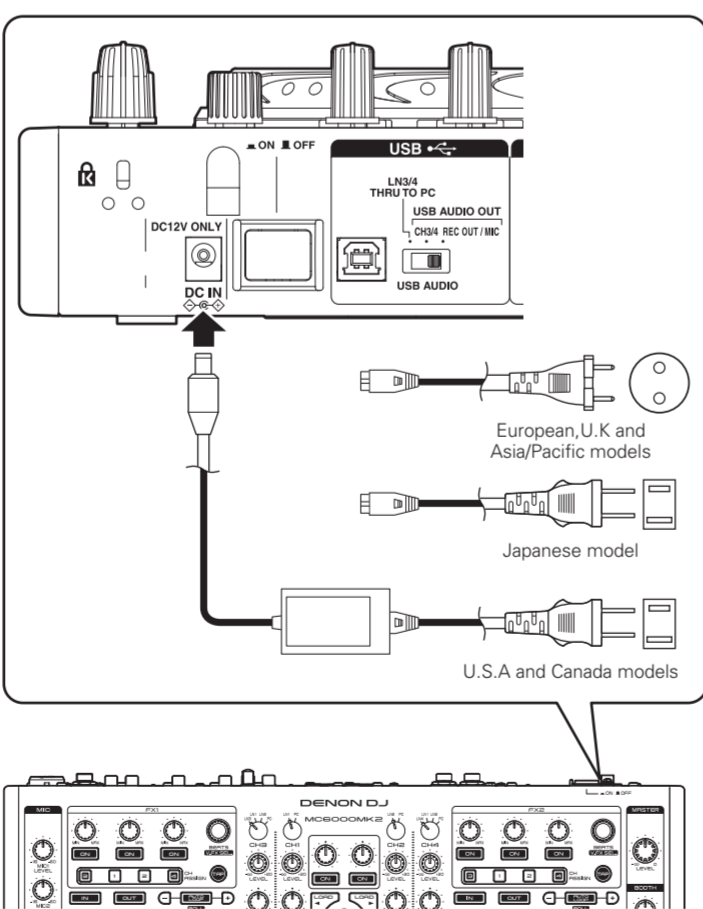
[1] Connect your audio system



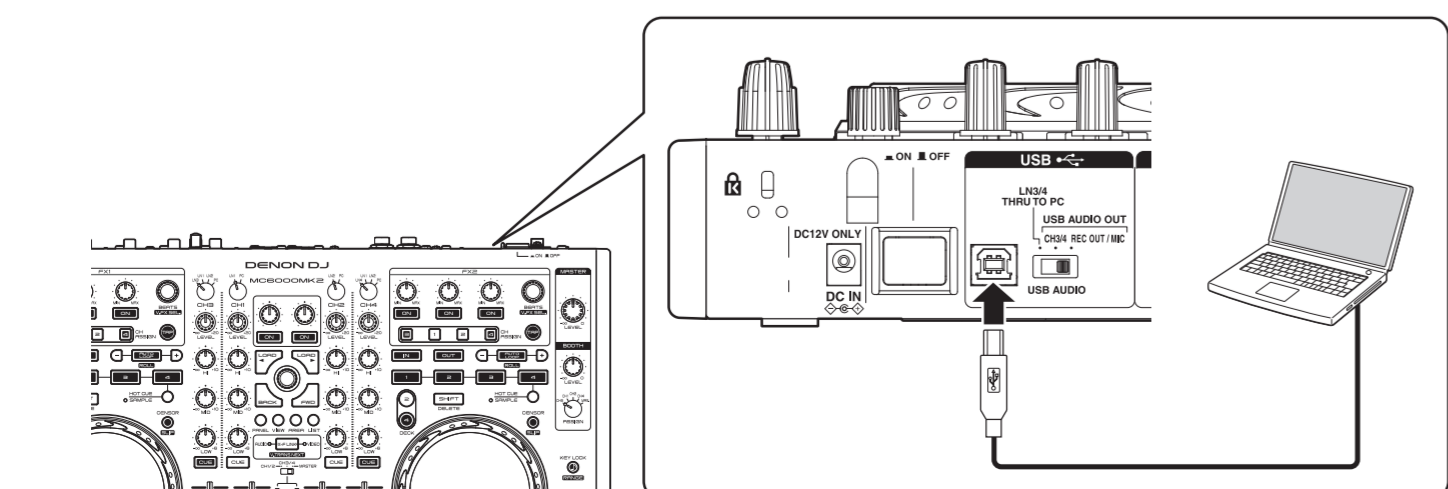
[2] Setting



[3] Turn on the MC6000MK2



[4] Connect the MC6000MK2 to your computer



- Anweisungen zur Installation auf DEUTSCH finden Sie auf der Rückseite.
- Voir la page suivante pour connaître les procédures d'installation en FRANÇAIS.
- Vedere sul retro per le procedure di installazione in ITALIANO.
- Véanse al dorso los procedimientos de instalación en ESPAÑOL.
- Se andra sidan för installationsprocedurer på SVENSKA.
- 日本語によるインストール方法は、裏面をご覧ください。

ENGLISH Read before Installation

Before installing the software

For the latest version of the Serato DJ Intro software, access the web site of Serato, and download the software from there. A software download link is also provided on the included CD-ROM.

- The user is responsible for preparing the computer, network devices and other elements of the Internet usage environment required for a connection to the Internet.

Setup Procedure

For Windows

About the driver software

This driver software is an exclusive ASIO driver for outputting audio signals from the computer.

- The supplied ASIO driver is for the exclusive use on DENON DJ controllers. Available on MC6000MK2/DN-MC6000/MC3000/MC2000 models.

1 Insert the supplied "MC6000MK2 Resource disc" into the computer, and install the ASIO driver.

Page 7 on the Resource disc Owner's Manual

2 Check that MC6000MK2 is displayed on the ASIO driver control panel screen.

- When the ASIO driver control panel screen is displayed, close it before launching Serato DJ Intro.
- If there is no check mark on the left of the MC6000MK2, click the Enable button to display a check mark and display the device name in bold-type.

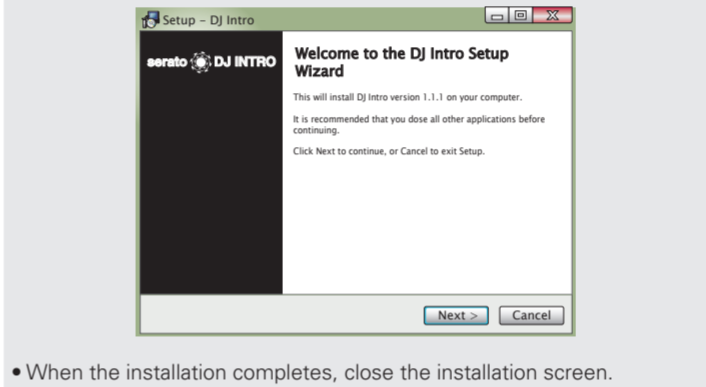
Page 9 on the Resource disc Owner's Manual

3 Insert the supplied "MC6000MK2 Resource disc" into the computer, and download the Serato DJ Intro.

Download the Serato DJ Intro software from the download page.

4 Install the Serato DJ Intro.

- Unzip the downloaded file, then double-click the unzipped file to launch the installer.
- Follow each step in the installation screen for installation.



- When the installation completes, close the installation screen.

For Mac OS

Security Settings in Mac OS 10.8 (Mountain Lion)

Before you can download the Serato DJ Intro software via the "MC6000MK2 Resource disc" you must temporarily change the security settings in system preferences.

- 1 Go to System Preferences.
- 2 Select the "Security and Privacy" preference.
- 3 Click the lock to make changes.
- 4 Select "Anywhere".
- 5 Click the lock.



1 Insert the supplied "MC6000MK2 Resource disc" into the computer, and download the Serato DJ Intro.

Download the Serato DJ Intro software from the download page.

2 Install the Serato DJ Intro.

- Double-click the downloaded dmg file to launch the installer.
- Follow each step in the installation screen for installation.



- When the installation completes, close the installation screen.

- It is recommended to use the newest version of Serato DJ Intro.
- The latest version can be downloaded free of charge from the web site of SERATO.
- For detailed information about how to set up and use the DJ software, see the supplied instruction manual for the DJ software.

[5] Launching Serato DJ Intro

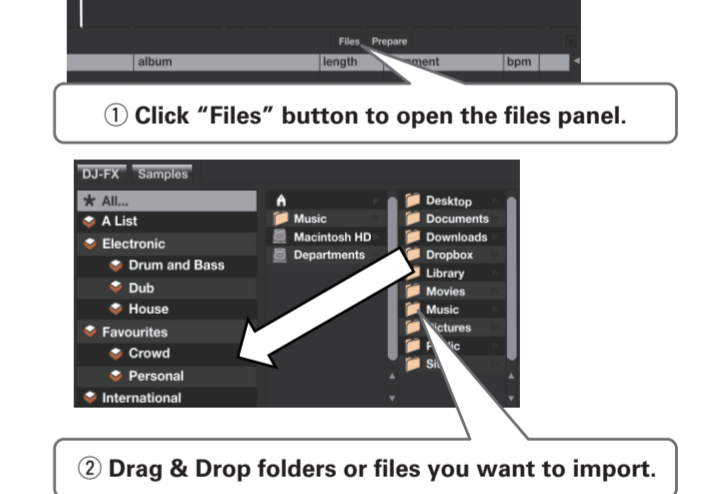
Serato DJ Intro Manual



- Start up window.

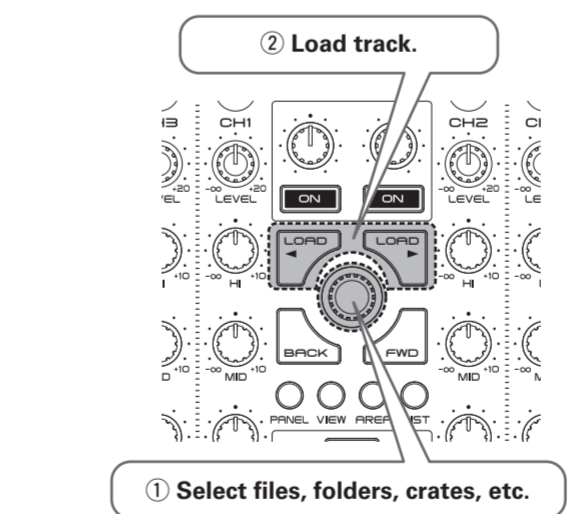
[6] Importing Music

Serato DJ Intro Manual

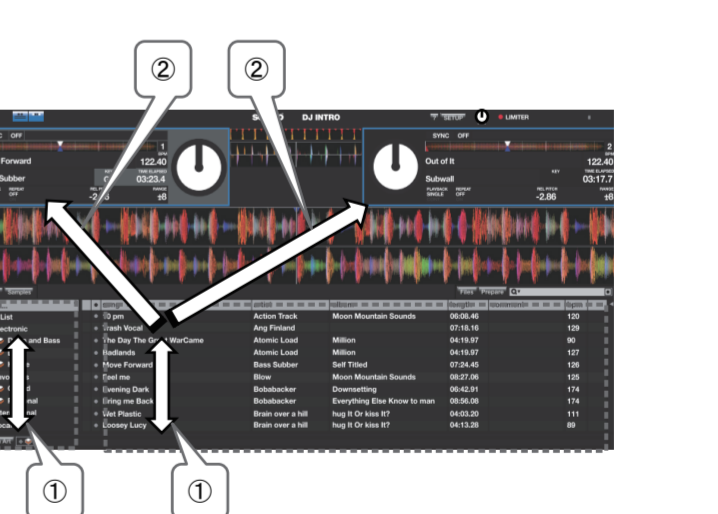


- Click "Files" button to open the files panel.
- Drag & Drop folders or files you want to import.

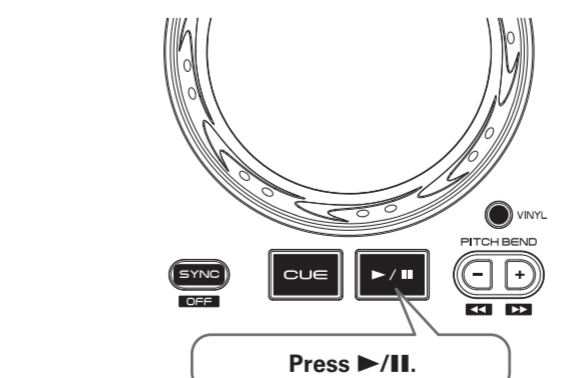
[7] Load track



- Select files, folders, crates, etc.



[8] Play the track



- Press >||.

[9] Control level

