

α

α ALPHA™ DESKTOP RECORDING STUDIO



IMPORTANT SAFETY INSTRUCTIONS



CAUTION

RISK OF ELECTRIC SHOCK
DO NOT OPEN



ATTENTION: RISQUE DE CHOC ELECTRIQUE - NE PAS OUVRIR

WARNING: TO REDUCE THE RISK OF FIRE OR ELECTRIC SHOCK DO NOT EXPOSE THIS EQUIPMENT TO RAIN OR MOISTURE

The symbols shown above are internationally accepted symbols that warn of potential hazards with electrical products. The lightning flash with arrowpoint in an equilateral triangle means that there are dangerous voltages present within the unit. The exclamation point in an equilateral triangle indicates that it is necessary for the user to refer to the owner's manual.

These symbols warn that there are no user serviceable parts inside the unit. Do not open the unit. Do not attempt to service the unit yourself. Refer all servicing to qualified personnel. Opening the chassis for any reason will void the manufacturer's warranty. Do not get the unit wet. If liquid is spilled on the unit, shut it off immediately and take it to a dealer for service. Disconnect the unit during storms to prevent damage.

SAFETY INSTRUCTIONS

NOTICE FOR CUSTOMERS IF YOUR UNIT IS EQUIPPED WITH A POWER CORD.

WARNING: THIS APPLIANCE MUST BE EARTHED. CONNECT ONLY TO A MAINS SOCKET OUTLET WITH PROTECTIVE EARTHING CONNECTION.

The cores in the mains lead are coloured in accordance with the following code:

GREEN and YELLOW - Earth BLUE - Neutral BROWN - Live

As colours of the cores in the mains lead of this appliance may not correspond with the coloured markings identifying the terminals in your plug, proceed as follows:

- The core which is coloured green and yellow must be connected to the terminal in the plug marked with the letter E, or with the earth symbol, or coloured green, or green and yellow.
- The core which is coloured blue must be connected to the terminal marked N or coloured black.
- The core which is coloured brown must be connected to the terminal marked L or coloured red.

This equipment may require the use of a different line cord, attachment plug, or both, depending on the available power source at installation. If the attachment plug needs to be changed, refer servicing to qualified service personnel who should refer to the table below. The green/yellow wire shall be connected directly to the units chassis.

CONDUCTOR	WIRE COLOR	
	Normal	Alt
L LIVE	BROWN	BLACK
N NEUTRAL	BLUE	WHITE
E EARTH GND	GREEN/YEL	GREEN

WARNING: If the ground is defeated, certain fault conditions in the unit or in the system to which it is connected can result in full line voltage between chassis and earth ground. Severe injury or death can then result if the chassis and earth ground are touched simultaneously.

WARNING FOR YOUR PROTECTION

READ THESE INSTRUCTIONS:

KEEP THESE INSTRUCTIONS

HEED ALL WARNINGS

FOLLOW ALL INSTRUCTIONS

DO NOT USE THIS APPARATUS NEAR WATER

THE APPARATUS SHALL NOT BE EXPOSED TO DRIPPING OR SPLASHING LIQUID AND NO OBJECT FILLED WITH LIQUID, SUCH AS VASES, SHALL BE PLACED ON THE APPARATUS.

CLEAN ONLY WITH A DRY CLOTH.

DO NOT BLOCK ANY OF THE VENTILATION OPENINGS. INSTALL IN ACCORDANCE WITH THE MANUFACTURER'S INSTRUCTIONS.

DO NOT INSTALL NEAR ANY HEAT SOURCES SUCH AS RADIATORS, HEAT REGISTERS, STOVES, OR OTHER APPARATUS (INCLUDING AMPLIFIERS) THAT PRODUCE HEAT.

ONLY USE ATTACHMENTS/ACCESSORIES SPECIFIED BY THE MANUFACTURER.

UNPLUG THIS APPARATUS DURING LIGHTNING STORMS OR WHEN UNUSED FOR LONG PERIODS OF TIME.

Do not defeat the safety purpose of the polarized or grounding-type plug. A polarized plug has two blades with one wider than the other. A grounding type plug has two blades and a third grounding prong. The wide blade or third prong are provided for your safety. If the provided plug does not fit your outlet, consult an electrician for replacement of the obsolete outlet.

Protect the power cord from being walked on or pinched particularly at plugs, convenience receptacles, and the point where they exit from the apparatus.

Use only with the cart stand, tripod bracket, or table specified by the manufacturer, or sold with the apparatus. When a cart is used, use caution when moving the cart/apparatus combination to avoid injury from tip-over.



Refer all servicing to qualified service personnel. Servicing is required when the apparatus has been damaged in any way, such as power-supply cord or plug is damaged, liquid has been spilled or objects have fallen into the apparatus, the apparatus has been exposed to rain or moisture, does not operate normally, or has been dropped.

POWER ON/OFF SWITCH: For products provided with a power switch, the power switch DOES NOT break the connection from the mains.

MAINS DISCONNECT: The plug shall remain readily operable. For rack-mount or installation where plug is not accessible, an all-pole mains switch with a contact separation of at least 3 mm in each pole shall be incorporated into the electrical installation of the rack or building.

FOR UNITS EQUIPPED WITH EXTERNALLY ACCESSIBLE FUSE RECEPTACLE: Replace fuse with same type and rating only.

MULTIPLE-INPUT VOLTAGE: This equipment may require the use of a different line cord, attachment plug, or both, depending on the available power source at installation. Connect this equipment only to the power source indicated on the equipment rear panel. To reduce the risk of fire or electric shock, refer servicing to qualified service personnel or equivalent.

This Equipment is intended for rack mount use only.

IMPORTANT SAFETY INSTRUCTIONS

ELECTROMAGNETIC COMPATIBILITY

This unit conforms to the Product Specifications noted on the **Declaration of Conformity**. Operation is subject to the following two conditions:

- this device may not cause harmful interference, and
- this device must accept any interference received, including interference that may cause undesired operation.

Operation of this unit within significant electromagnetic fields should be avoided.

- use only shielded interconnecting cables.

U.K. MAINS PLUG WARNING

A molded mains plug that has been cut off from the cord is unsafe. Discard the mains plug at a suitable disposal facility.

NEVER UNDER ANY CIRCUMSTANCES SHOULD YOU INSERT A DAMAGED OR CUT MAINS PLUG INTO A 13 AMP POWER SOCKET.

Do not use the mains plug without the fuse cover in place. Replacement fuse covers can be obtained from your local retailer. Replacement fuses are 13 amps and **MUST** be ASTA approved to BS1362.

DECLARATION OF CONFORMITY

Manufacturer's Name: Lexicon Professional
Manufacturer's Address: 8760 S. Sandy Pkwy.
Sandy, UT 84070, USA

Declares that the product:

Product name: Lexicon Alpha™
Note: Product name may be suffixed by the letters-EU.

Product option: None

Conforms to the following Product Specifications:

Safety: IEC 60065 (2002)

EMC: EN 55013 (2001 + A1)
EN 55020 (1998)

Supplementary Information:

The product herewith complies with the requirements of the Low Voltage Directive 72/23/EEC and the EMC Directive 89/336/EEC as amended by Directive 93/68/EEC.

Vice-President
of Engineering - MI

8760 S. Sandy Parkway
Sandy, Utah 84070, USA
Date: February 2, 2006

European Contact: Your local Lexicon
Professional Sales
and Service Office or

Harman Music Group
8760 S. Sandy Pkwy.
Sandy, UT 84070 USA
Ph: (801) 566-8800
Fax: (801) 568-7583

SERVICE INFO

If you require technical support, contact Lexicon® Professional Customer Service. Be prepared to accurately describe the problem. Know the serial number of your unit, found on a sticker attached to the bottom of the Alpha Studio™. If you have not already taken the time to fill out your warranty registration card and send it in, please do so now.

Before you return a product to the factory for service, we recommend you refer to the manual. Make sure you have correctly followed installation steps and operation procedures. If you are still unable to solve a problem, contact our Customer Service Department at **(801) 568-7660** for consultation. If you need to return a product to the factory for service, you **MUST** contact Customer Service to obtain a Return Authorization Number. No returned products will be accepted at the factory without a Return Authorization Number. Please refer to the Warranty information on the following page, which extends to the first end-user. After expiration of the warranty, a reasonable charge will be made for parts, labor, and packing if you choose to use the factory service facility. In all cases, you are responsible for transportation charges to the factory. Lexicon Professional will pay return shipping if the unit is still under warranty.

Use the original packing material if it is available. Mark the package with the name of the shipper and with these words in red: **DELICATE INSTRUMENT, FRAGILE!** Insure the package properly. Ship prepaid, not collect. Do not ship parcel post.

WARRANTY

This warranty is valid only for the original purchaser and only in the United States.

1. The warranty registration card that accompanies this product must be mailed (or online registration must be completed at www.lexiconpro.com) within 30 days after purchase date to validate this warranty. Proof-of-purchase is considered to be the burden of the consumer.
2. Lexicon Professional warrants this product, when bought and used solely within the U.S., to be free from defects in materials and workmanship under normal use and service.
3. Lexicon Professional's liability under this warranty is limited to repairing or, at our discretion, replacing defective materials that show evidence of defect, provided the product is returned to Lexicon Professional **WITH RETURN AUTHORIZATION** from the factory, where all parts and labor will be covered up to a period of 1 year. A Return Authorization number must be obtained from Lexicon Professional by telephone. The company shall not be liable for any consequential damage as a result of the product's use in any circuit or assembly.
4. Lexicon Professional reserves the right to make changes in design or make additions to or improvements upon this product without incurring any obligation to install the same additions or improvements on products previously manufactured.
5. The foregoing is in lieu of all other warranties, expressed or implied, and Lexicon Professional neither assumes nor authorizes any person to assume on its behalf any obligation or liability in connection with the sale of this product. In no event shall Lexicon Professional or its dealers be liable for special or consequential damages or from any delay in the performance of this warranty due to causes beyond its control.

TABLE OF CONTENTS

INTRODUCTION	8
FEATURES	8
UNPACKING THE ALPHA STUDIO™	9
COMPUTER MINIMUM REQUIREMENTS	9
Windows®	9
Macintosh®	9
THE FRONT PANEL.....	10
¼" Instrument Input Jack.....	10
Line 1/Inst.....	10
Peak LEDs	10
Line 2/Mic.....	10
Monitor Assign.....	10
Monitor Mix	10
USB LED.....	11
Output Level.....	11
⅛" Headphone Output Jack.....	11
THE REAR PANEL	12
USB Port	12
Line In 1-2.....	12
Mic 1 Input.....	12
¼" Left/Right Line Outputs.....	12
CONNECTING TO THE ALPHA STUDIO	13
MONITORING CONNECTIONS.....	13
Connecting Headphones.....	13
Connecting to Monitor Speakers.....	13
Connecting RCA Outputs for Monitoring to a Home Stereo	13
ABOUT RECORDING CONNECTIONS.....	14
To Connect a Microphone.....	14
To Connect a Line Level Source.....	14
To Connect an Instrument.....	14
MIXDOWN CONNECTIONS	15
Connecting to an External Recorder.....	15
Mixing Within Cubase® LE 4	15
WINDOWS® SOFTWARE SETUP.....	16
Windows® Vista and XP	16

MACINTOSH® SOFTWARE SETUP	17
Mac OS.....	17
USING THE LEXICON® ALPHA STUDIO™	18
Section I – Recording Audio With the Alpha Studio™	19
A. Recording Using the Microphone/Line Input.....	19
B. Recording a Guitar using the Instrument Input	26
Section II – Using Software Input Monitoring.....	28
Section III – Adjusting the Buffer Settings.....	31
A. Adjusting the Buffers in Windows® XP	31
B. Adjusting the Buffers in Mac OSX.....	32
SPECIFICATIONS	34
SIGNAL ROUTING DIAGRAM	35

INTRODUCTION

Congratulations on your purchase of the Lexicon® Alpha Desktop Recording Studio™. The Alpha Studio is a complete package of hardware and software that turns your USB-equipped computer into a professional multitrack recording workstation. Whether you use it for high-quality stereo location recording with a laptop computer, or for multitrack overdubbing and mixing in a home studio desktop system, the Alpha Studio hardware provides the professional-quality inputs and outputs, metering, and level controls that computer sound cards or built-in audio connections lack.

So you can make full use of the Alpha Studio right away, we've included the popular Steinberg® Cubase® LE 4 production suite software for PC and Mac® computers. Cubase LE 4 offers integrated multi-track recording, editing and mixing of up to 48 audio tracks, 64 MIDI tracks, VST® Instruments support, VST plug-in effects support, and an array of additional features. Lexicon's Pantheon™ VST reverb plug-in is a major feature of the Alpha Studio package, providing the lush Lexicon reverbs that have been used on professional recordings for over thirty years. Alternatively, the Lexicon Alpha Studio may be used as an interface with almost any other major audio recording software you may have, such as Steinberg Nuendo®, Cubase SX®, MOTU® Digital Performer®, Garage Band®, Cakewalk® Sonar™, and many others.

FEATURES

THE ALPHA DESKTOP RECORDING STUDIO™ PROVIDES THE FOLLOWING:

- 4 analog audio inputs
 - 1 - XLR mic input with extremely low noise preamp and 50 dB gain
 - 2 - ¼" analog RF filtered TRS active-balanced line inputs
 - 1 - ¼" high-impedance analog instrument input
- 2 - RCA outputs
- 2 - ¼" analog TRS active line outputs
- High powered headphone amplifier
- 24-bit A/D and D/A converters, supporting sample rates of 44.1 kHz and 48 kHz
- Zero-latency analog record monitoring with adjustable balance between Direct and Playback Signals
- Stereo and Mono input source monitoring
- 100% USB Powered

UNPACKING THE ALPHA STUDIO™

The Alpha Studio™ is shipped in one carton, containing the Alpha Studio Interface hardware, Steinberg® Cubase® LE 4 and Lexicon® Pantheon™ plug-in software for Windows® and Macintosh® based systems. After unpacking, save all the packaging materials in case you ever have to ship the unit. Thoroughly inspect the Alpha Studio and packing materials for signs of damage. Report any shipment damage to the carrier that delivered the product or dealer from whom you purchased the product at once.

THE FOLLOWING ITEMS ARE INCLUDED:

- Alpha desktop audio interface hardware
- Installer CD-ROM containing Cubase LE 4 Recording Software, USB drivers and the Lexicon Pantheon Reverb Plug-in for Mac® and Windows®
- USB Connector Cable
- This Owner's Manual
- Lexicon Pantheon Reverb Plug-in User's Guide
- Lexicon Professional warranty registration

NOTE: The full Cubase LE 4 manual is located "online" on the software CD

COMPUTER MINIMUM REQUIREMENTS

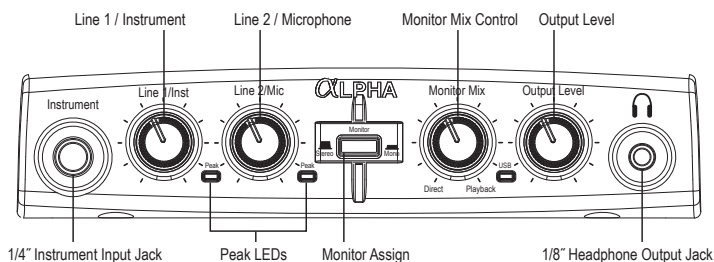
Powerful software for audio recording requires a powerful computer with the right operating system software, processor, memory, and hard drive space. Most computers currently sold already meet these requirements, or can be upgraded to be compatible with the Lexicon Alpha Desktop Recording Studio. As with all such systems, adding more RAM than the minimum will allow you to do more processing and improve performance, and more disk space will allow you to record more tracks for a longer time. See the Alpha Studio Software Installation Guide and the Cubase LE 4 manual on the software installation CD for more information.

WINDOWS® VISTA, XP HOME, OR XP PROFESSIONAL

- Pentium / Athlon 1.4 GHz
- 512 MB RAM
- Display Resolution 1024 x 768 pixels
- Windows DirectX compatible audio hardware; ASIO compatible audio hardware recommended for low latency performance
- DVD-ROM drive
- Internet access required for license activation

MACINTOSH®

- Power Mac G4 1 GHz or Core Solo 1.5 GHz
- 512 MB RAM
- OS X Version 10.4
- Display Resolution 1024 x 768 pixels
- CoreAudio compatible audio hardware
- DVD-ROM drive
- Internet access required for license activation



THE FRONT PANEL

The Alpha Studio™ front panel offers the following features:

1/4" INSTRUMENT INPUT JACK

This 1/4" jack accepts unbalanced, low-level, high impedance instrument sources such as electric guitar, acoustic guitar with a pickup, and electric bass. The input gain is adjusted using the **Line 1/Inst** knob on the front panel. When an instrument is plugged into this input, it disables the **Line 1** audio input on the rear panel.

LINE 1/INST

This knob adjusts the Line 1 and Instrument Input gain.

PEAK LEDS

These LEDs light when the input signal is within 5dB of analog clipping. If the Peak LEDs flicker occasionally, the signal is approaching clipping levels, but does not necessarily indicate distortion or actual clipping.

LINE 2/MIC

This knob adjusts the Line 2 and Mic Input gain.

MONITOR ASSIGN

This button selects whether a pair of analog audio sources will be heard in stereo or mono in the Direct Monitor Mix. In Stereo mode, the left inputs (*Line 1/Inst*) are routed to the left channel and right inputs (*Line 2/Mic*) are routed to the right channel.

In Mono mode, you'll hear all inputs in the center of the Direct Monitor Mix through the Headphone or Line outputs.

When the Monitor switch is in Mono, it does not change the signals going to the computer in any way—they will still be separate and stereo in the computer.

MONITOR MIX

The Alpha Studio gives you the ability to hear your analog input signals directly and immediately while recording, without having to adjust levels in software, and before the delay caused by digital converters and computer recording latency. This zero-latency analog monitoring is controlled by the **Monitor Mix** knob, which you can use to adjust the blend between the Alpha Studio's live analog inputs (*called "Direct"*) and any audio coming back from the computer via USB (*"Playback"*). To adjust the playback mix coming back from the computer (*previous tracks, effect returns etc.*), use

For the cleanest recording, adjust the Gain so the Peak LED flashes only occasionally, on the loudest part of the performance.

DO NOT TURN DOWN A GAIN CONTROL TO GET THE RIGHT MIX IN YOUR HEADPHONES OR MONITORS WHILE RECORDING. USE THE **Monitor Mix** CONTROL FOR THIS PURPOSE.

the faders on the Mixer screen of the software. To hear only the live source input signals plugged into the Alpha Studio™, turn the **Monitor Mix** knob fully left to **Direct**. To hear only the mix from the computer, turn the **Monitor Mix** knob fully right to **Playback**. The output from the Monitor Mix control is routed directly to the Line and Headphone outputs. This ability to easily control the relative levels of computer audio playback and latency-free live analog inputs is very useful when overdubbing.

USB LED

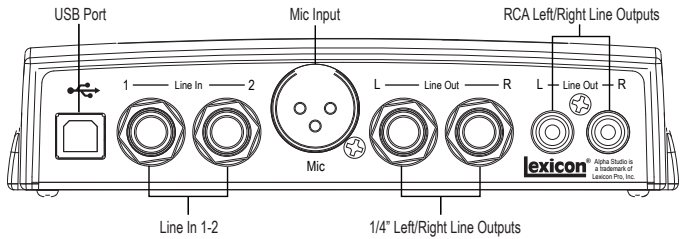
When the blue **USB LED** is on, it indicates the Alpha Studio is being powered by your computer and audio signals can pass in and out of the system.

OUTPUT LEVEL

This knob controls the overall output level of the Alpha Studio's Line and Headphone outputs.

1/8" HEADPHONE OUTPUT JACK

The high powered Headphone output accommodates stereo headphones with an 1/8" stereo plug.



THE REAR PANEL

The Alpha Studio™ rear panel offers the following features:

USB PORT

The USB Port is used to connect the Alpha Studio to your computer and provides the Alpha Studio hardware with power. A standard USB cable is included. The Alpha Studio supports USB 2.0 full speed.

LINE IN 1-2

These ¼" inputs can accept both balanced (*3-conductor TRS*) and unbalanced (*2-conductor TS*) line level audio sources. The input gain is adjusted using the **Line 1/Inst** and **Line2/Mic** gain knobs on the front panel.

Note: When a cable is connected to the **Line 2** input, the **Mic** input is disabled.

MIC INPUT

This balanced XLR input features a high-quality mic preamp designed specifically for low-impedance professional dynamic and self-powered condenser microphones. The input gain is adjusted using the **Line 2/Mic** gain knob on the front panel, with 50 dB of gain at the maximum setting.

Note: When a cable is connected to the **Instrument** input on the front panel, the **Line 1** input is disabled.

¼" LEFT/RIGHT LINE OUTPUTS

These outputs support balanced TRS or unbalanced TS ¼" connections. These outputs can be connected to a mixing board, power amplifier, powered studio monitors, recorder, or another line level input.

RCA LEFT/RIGHT LINE OUTPUTS

These outputs support RCA connections. These outputs can be connected to a mixing board, power amplifier, powered studio monitors, recorder, or another line level input.

CONNECTING TO THE ALPHA STUDIO™

The Alpha Studio™ is both a 2 x 2 x 2 mixer and a USB audio interface that can be used in a variety of audio setups. This section describes how to make basic connections for the following applications:

- Monitoring Audio
- Recording Audio
- Connecting a Recorder for Mixdown

MONITORING CONNECTIONS

The Alpha Studio allows you to monitor audio from both the hardware inputs (*Direct*) and from the computer (*Playback*). Use the **Monitor Mix** control to balance between the direct audio and playback audio from your computer (*For a complete description of the Monitor Mix control, see page 10*).

You can listen to (*monitor*) the audio through either the 1/8" Headphone jack on the front panel, through studio monitors using the 1/4" or RCA L/R Line Out jacks on the rear panel, or both. The output level of both the L/R Line Out jacks and the Headphone jack are controlled with the **Output Level** knob on the front panel.

Alpha Studio's 1/4" L/R Line Outputs have a nominal output of +4dBu, and support both balanced (*TRS*) or unbalanced (*TS*) connections.

CONNECTING HEADPHONES:

1. Connect headphones to the **Headphone** jack located on the front panel of the Alpha Studio. The Headphone jack accepts an 1/8" TRS connector.
2. Adjust headphone volume with the **Output Level** knob.

CONNECTING TO MONITOR SPEAKERS:

1. Using 1/4" cables (balanced TRS cables are recommended), connect the **L/R Line Out** jacks on the rear panel of the Alpha Studio to the appropriate inputs on your mixer, power amp, or powered monitors.
2. Adjust the Alpha Studio's output volume with the **Output Level** knob. If using both headphones and monitor speakers, adjust the level of the external power amp or speakers using their gain controls after you've set the desired level in your headphones.

CONNECTING RCA OUTPUTS FOR MONITORING TO A HOME STEREO

Connect the **RCA Line Out 1-2** jacks on the rear panel of the Alpha Studio to the appropriate inputs on your stereo, typically the Tape In or Aux In jacks, using standard RCA cables. Keep the **Output Level** knob on the Alpha Studio low at first, raising it slowly to match the level of other units connected to the stereo.

ABOUT RECORDING CONNECTIONS

Analog audio signals are created by microphones, synthesizers, mixers, and instruments with magnetic pickups.

Of these sources, microphones and magnetic instrument pickups have the lowest output level, and generally require the most amplification. Keyboards, preamps, and mixers output “line level” audio, which varies with each device between the -10 dBV and +4 dBu standards.

TO CONNECT A MICROPHONE

Plug an XLR cable directly from a microphone into the **Mic** input on the Alpha Studio™ rear panel. Only dynamic (non-powered) or self-powered condenser mics are accepted.

NOTE: When using the **Mic** input, DO NOT plug a cable into the **Line In 2** input. Inserting a cable into the **Line In 2** input disconnects the mic input internally.

TO CONNECT A LINE LEVEL SOURCE

Plug a ¼" TS (*unbalanced*) or TRS (*balanced*) cable directly from the line level source into the desired **Line In** jack on the rear panel of Alpha Studio. Line level sources include keyboards, drum machines, CD and cassette players, or external microphone preamps and effects. If the line level source has something other than ¼" outputs, cable adapters can be used.

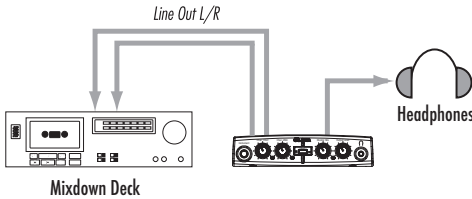
TO CONNECT AN INSTRUMENT

Plug a standard ¼" TS (*instrument*) cable directly from the instrument into the **Instrument** input jack on the front panel of Alpha Studio. Note that this will disable the **Line In 1** jack on the back panel.

Note: Plugging a cable into the **Instrument** input disconnects the **Line In 1** input. Plugging a cable into the **Line In 2** input disconnects the **Mic** input.

MIXDOWN CONNECTIONS

After you record and mix your sessions in either Cubase® LE 4 or other recording software, you may want to mix them down to a DAT, audio cassette, or other stereo 2-track recording device.



CONNECTING TO AN EXTERNAL RECORDER

Connect either the RCA or 1/4" **Line Out L-R** jacks on the back of the Alpha Studio™ to the left and right inputs, respectively, on your recorder (*cassette deck, CD burner, or other recorder with analog inputs*). Refer to your recorder's operator's manual for more information about setting recording levels.

If you are connecting to an analog mixdown deck (*such as a cassette recorder*), start with the **Output Level** knob on the Alpha Studio at about the 12 o'clock (*straight up*) position, and the recorder's input level also at or near 12 o'clock. Adjust the **Output Level** knob on the Alpha Studio until the meters on your recording deck read consistently between 0dB to +4dB, raising the input level control on the recorder if necessary.

If you are connecting to a digital recorder such as a DAT or CD recorder, set the input level(s) on the recording device all the way open, to their maximum setting, and then adjust the **Output Level** knob on the Alpha Studio until the meters on your recording deck device consistently peak just below the 0dBFS (*Full Scale*) mark without causing clipping (*going over the 0dBFS mark*).

To hear the mix through control room speakers, connect the outputs of the recorder to the inputs of the control room amplifier or powered monitors. Adjust the control room level using the output level of the recording deck or the input level of the control room amplifier or speakers.

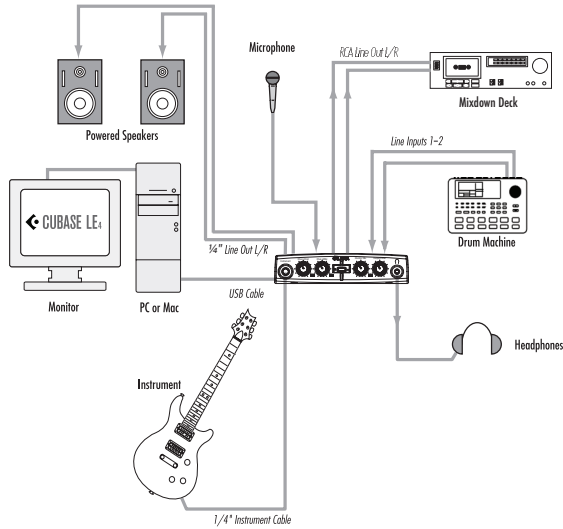
MIXING WITHIN CUBASE® LE 4

You can mixdown directly within Cubase LE 4 or other recording software, and burn an audio CD from that mix (*provided your computer has a CD-R drive*). Consult the Cubase LE 4 online manual or documentation for your recording software for a complete description of mixing within the software.

For the cleanest recording, adjust the Gain so the Peak LED flashes only occasionally, on the loudest part of the performance.

DO NOT TURN DOWN A GAIN CONTROL TO GET THE RIGHT MIX IN YOUR HEADPHONES OR MONITORS WHILE RECORDING. USE THE **Monitor Mix** CONTROL FOR THIS PURPOSE.

CONNECTIONS DIAGRAM



WINDOWS® SOFTWARE SETUP

You *must* consult the Software Installation Guide on the included CD to ensure the successful installation of the recording software and USB drivers.

If you haven't already installed the Cubase LE 4 and Lexicon® Pantheon™ plug-in software, please do so before continuing on to the next section. Follow the on-screen instructions to install the USB drivers.

WINDOWS® VISTA AND XP

You must install the USB drivers after you've made the connection between your computer's USB port and the USB port of the Alpha Studio™.

MACINTOSH® SOFTWARE SETUP

You *must* consult the Software Installation Guide on the included CD to ensure the successful installation of the recording software and USB setup.

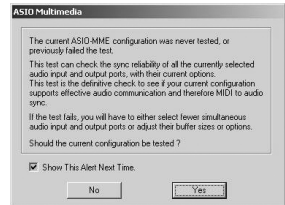
If you haven't already installed the Cubase® LE 4 and Lexicon Pantheon™ plug-in software, please do so before continuing on to the next section.

MAC OS

A USB device must initialize itself with the host computer to operate correctly. The simplest way to avoid problems is to connect the Alpha Studio to the USB port after the computer is booted.

USING THE LEXICON® ALPHA STUDIO™

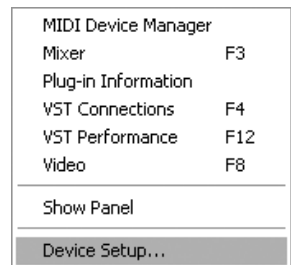
1. Start Cubase® LE 4. The first time you use Cubase LE 4 with the Alpha Studio™ you may be asked to run the Multimedia test as shown here. Deselect the check box, then click **NO**.



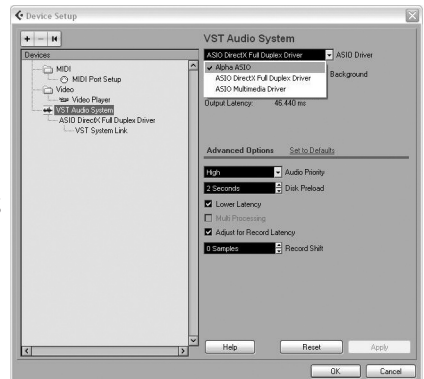
2. Cubase LE 4 may display the following warning that the configuration has not been tested. Click **OK**.



3. Once Cubase LE 4 opens, go to **Devices>Device Setup**.



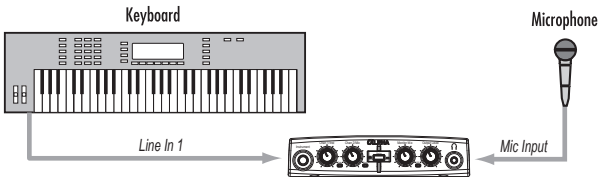
4. Under **Devices**, click on **VST Audio System** and select **Alpha ASIO** if it is not already selected. Click on **Switch** to select the driver, then click **OK**. You are now ready to begin recording using your Alpha Studio and Cubase LE 4.



SECTION I – RECORDING AUDIO WITH THE ALPHA STUDIO™

The diagram below shows how the Alpha Studio™ is connected for this particular setup.

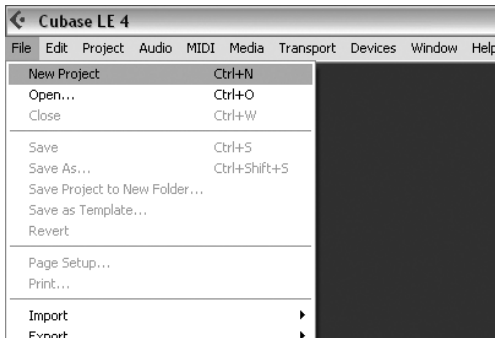
A. RECORDING USING THE MICROPHONE/LINE INPUT



Plug your microphone cable into the **Mic Input** XLR jack or line level audio source to the **Line 1** ¼" jack on the back of the Alpha Studio.

To set up the software to record:

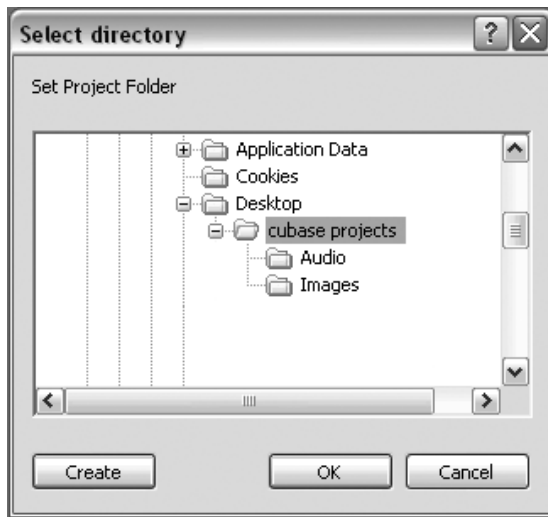
1. Open Cubase® LE 4.
2. Click **File** and select **New Project**.



3. Select **Default** and click OK.

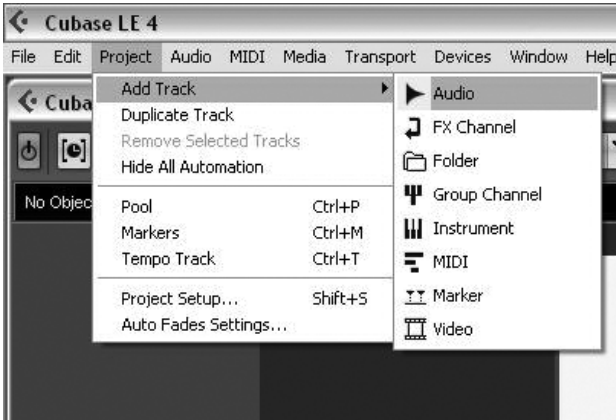


4. Select a location to store the project (*or use the default location*) and click **OK**.



To set the input of the track to record:

1. Click the Project menu and select Add Track | Audio. When the Add Audio Track dialog appears, click OK.



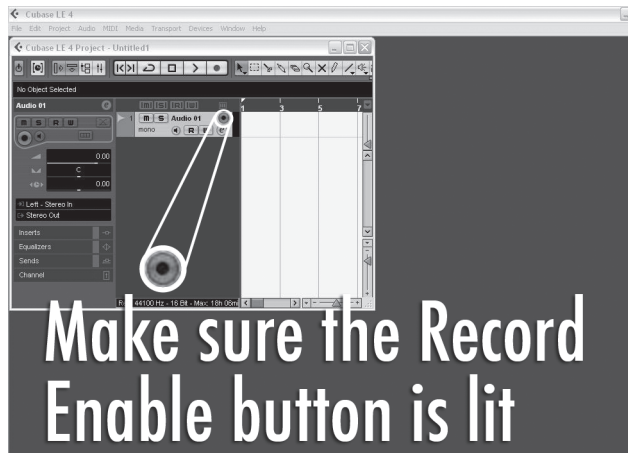
2. Make sure the **Show Inspector** button , located in the upper left corner of the screen is lit. The Inspector window appears on the left side of the screen.



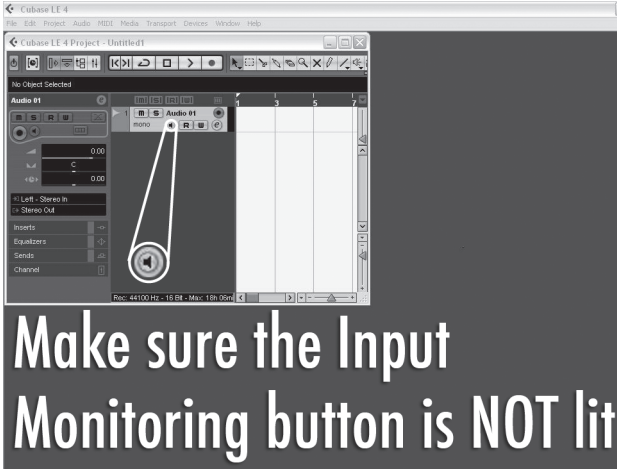
- In the Inspector, click the **Left - Stereo In**: box and select **Stereo In - Left** for the track input source. (*Stereo In - Left* relates to **Line 1/Inst**, *Stereo In - Right* relates to **Line 2/Mic** inputs.)



- In the **Track 1** window, the **Record Enable** button should already be red. If it isn't, click it so that it turns red.

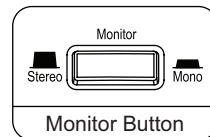
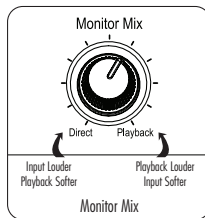


5. In the **Track 1** window, click the **Input Monitoring** button  so that it is not lit.



To check the input level from the microphone or Line Input:

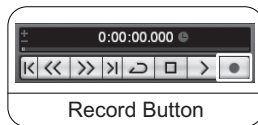
1. If you are using a mic and have connected the Alpha Studio™ to studio monitors, turn them down or off to avoid feedback.
2. If you want to hear the audio source in headphones, turn up the Alpha Studio **Output Level** knob and turn the **Monitor Mix** knob counter-clockwise (*towards the Direct side*). Press the **Monitor Assign** button so it is in the **Mono** position. This will let you hear output on both sides of your headphones when recording only one microphone or line level source.



3. Speak or sing into the microphone or play the line level source while gradually increasing the gain by turning up the **Line 1/Inst** or **Line 2/Mic** knob until you see the **Peak** LED light next to the **Line 1/Inst** or **Line 2/Mic** knob only flash occasionally.

To start recording:

1. Click the **Record** button on Cubase® LE 4's Transport control.



2. Speak or play an instrument into the microphone or line input.
3. When you are finished recording press the **Stop** button.



4. Press **Rewind** and press the **Play** button to listen to the track you have just recorded.



Rewind and Play Buttons

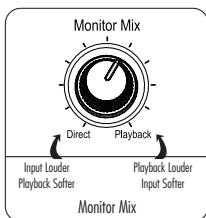
- Turn the Alpha Studio™ **Output Level** knob to adjust the listening volume, and make sure the **Monitor Mix** knob is somewhere in the middle between **Direct** and **Playback**.

To overdub a second track:

- Click anywhere in the gray area (*not on the buttons*) of the **Track 2** window (*labeled as Audio 02*).
- In the Inspector, click the **IN:** box and select **IN 1** or **IN 2** for Track 2's input. (*IN 1 relates to Line 1/Inst inputs, IN 2 relates to Line 2/Mic inputs*).
- In the **Track 2** window, the **Record Enable** button should already be red. If it isn't, click it so that it turns red.
- In the **Track 2** window, click the **Input Monitoring** button so that it is not lit.

To set monitor levels for a comfortable listening level:

- On the front of the Alpha Studio hardware, locate the **Monitor Mix** knob.



- While playing back the recording, adjust the **Monitor Mix** knob to balance the levels between direct input signal and recording playback. To make the direct input louder than the recording playback in the headphones, turn the **Monitor Mix** knob towards the **Direct** side. To make the recorded track louder, turn the **Monitor Mix** knob towards the **Playback** side.

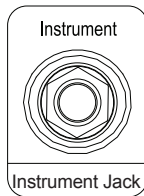
NOTE: Changing the **Monitor Mix** does not affect the recording level, only what you hear while recording. You can also adjust the playback level and pan position of the original track in your monitor by adjusting the controls for Track 1 within Cubase® LE 4's Mixer window.

- Click on **Record** and record the second (*overdubbed*) track.

B. RECORDING A GUITAR USING THE INSTRUMENT INPUT

This section explains how to record using the ¼" **Instrument** input jack on the front panel.

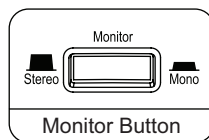
1. Plug your electric, acoustic, or bass guitar into the **Instrument** input jack on the front of the Alpha Studio™ hardware.



The **Instrument** input uses the same recording channel as the **Line 1** input; anything plugged into the ¼" **Line 1** input jack on the back of the Alpha Studio will not be recorded when a cable is connected to the ¼" **Instrument** input jack on the front panel.



NOTE: This jack is intended for electric guitar and bass, or acoustic instrument pickups, not line-level signals such as the output of keyboards or a direct out from a guitar amplifier. For those, use the **Line 1-2** input jacks on the back of the Alpha Studio hardware.

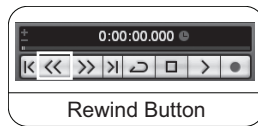
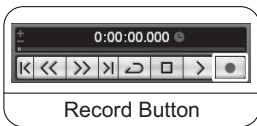
2. Press the **Monitor Assign** button between **Line 2/Mic** and **Monitor Mix** knobs so that it is in the **Mono** position.



3. Open Cubase LE 4, go to **File** and select **New Project>Default**, and a project location. (See Section 1 for more information.)

To set the input of the track to record from the 1-2 USB channels:

1. Click anywhere in the gray area (*not on the buttons*) of the **Track 1** window (labeled as **Audio 01**).
2. In the Inspector, click the **IN:** box and select **IN 1** for the track input source.
3. In the **Track 1** window, the **Record Enable** button  should already be red. If it isn't, click it so that it turns red.
4. In the **Track 1** window, click the **Input Monitoring** button  so that it is not lit.
5. Next, adjust the input gain of the **Instrument** input To set the input level, strum the guitar while gradually turning up the **Line 1** knob until the **Peak** LED lights only occasionally with the loudest signals.
6. To begin recording, click the **Record** button on the Transport control. Play some chords or notes on the guitar. When you are finished recording, click **Stop**, then **Rewind**.




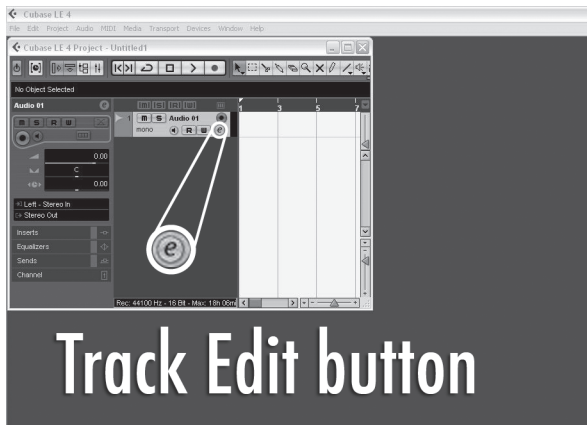
7. Click the **Play** button to listen to the track you have just recorded.



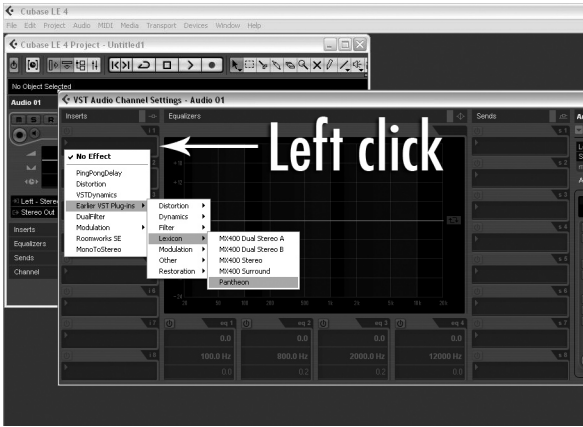
SECTION II - USING SOFTWARE INPUT MONITORING

The previous examples have turned off Cubase® LE 4's Input Monitoring software switches while recording tracks, and used the **Monitor Mix** knob on the front of the Alpha Studio™ hardware to directly monitor an input without latency. Software monitoring lets you listen to software-based effects in real time and adjust the monitor mix independently of the recording levels, but also introduces some latency (*delay*) into the input signal. The amount of latency depends on the amount of buffers assigned in the ASIO control panel. See page 31 for more information about adjusting buffer settings.

1. When using Cubase LE 4's input software monitoring with the Alpha Studio, you will want to set the **Monitor Mix** knob all the way to the **Playback** side.
2. Click the **Input Monitoring**  button on the track you are recording to. You will now be able to hear your input. Now you can try assigning an effect on the input. This example assigns a Pantheon™ reverb.
3. Click the **Track Edit** button.



- Left click on an **Insert** space and select **Earlier VST Plug-ins**, **Lexicon®**, and **Pantheon™**.



- Choose **Large Hall** from the drop down menu at the top of the Pantheon™ Edit Window.



- Because this is an insert effect, move the **Mix** slider to 50% (*see the Pantheon manual for more details*).



- Change the level to about -52dB. Now you will record with the Lexicon® Pantheon Reverb on your track.

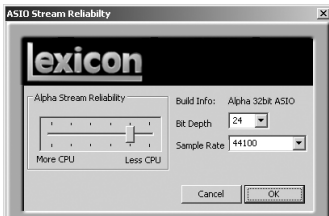
SECTION III - ADJUSTING THE BUFFER SETTINGS

Audio latency is the minimum time required for a computer to store recorded audio from an audio interface into the recording application memory and playback that same recorded audio back out audio interface output.

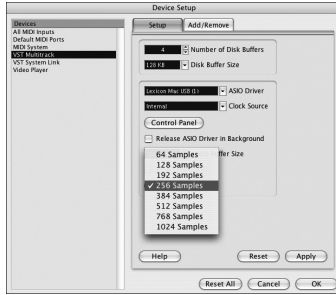
After the audio has been converted to the digital domain, it is passed to a *buffer* before it is processed by the driver and then passed to the audio application. An audio buffer is a reserved segment of memory used to hold this advance portion of audio data to compensate for momentary delays in processing. The size of an audio buffer is the maximum number of samples the buffer can hold. For sound coming from the computer, there is an output buffer before the digital to analog conversion. "Buffering" introduces latency, since a buffer needs to fill up by a certain amount before the data can continue along the chain.

The buffers in Cubase[®] LE 4 were automatically set at a safe setting for your computer when you installed the software. If you are using Input Monitoring, you may wish to adjust the amount of buffering to reduce this latency, or perceived delay in the input vs. output of audio. Lowering the buffers will lower the amount of latency when using Input Monitoring. Setting the buffers too low will result in unwanted digital artifacts, such as popping or crackling and possibly audio dropout. The faster the computer (*Hard Disk and CPU*), the lower you will be able to adjust the buffer setting without negatively impacting the audio. For more information, consult the Cubase online documentation.

A. ADJUSTING THE BUFFERS IN WINDOWS[®] VISTA AND XP



1. Open Cubase LE 4 and go to **Devices>Device Setup**.
2. Click on **VST Multitrack**.
3. Click **Control Panel** button. You will now see the ASIO control panel. The top slider is the buffer size; this number gets multiplied by the bottom slider, labeled **Number of Buffers**.
4. When you are finished adjusting the buffer size, click the **OK** button and return to your project to test the results.

B. ADJUSTING THE BUFFERS IN MAC® OSX

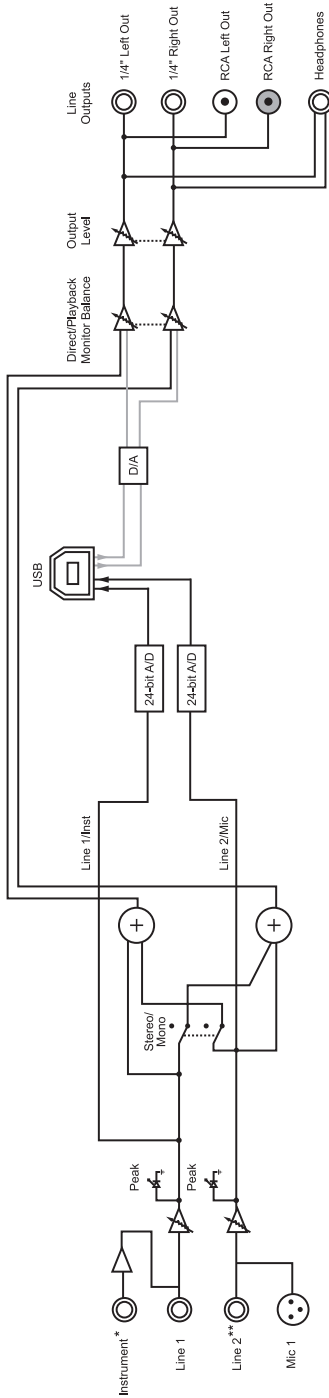
1. Open Cubase LE 4 and go to **Devices>Device Setup**.
2. Click on **VST Multitrack**.
3. Click on **Audio Buffer Size** and select the **Number of Samples**.
4. When you are finished click **OK**.

SPECIFICATIONS

Microphone Input:	Female XLR Pin 2 Hot
Input Impedance:	600 Ohms balanced
GAIN:	+50 dB
EIN:	-115 dB A-weighted @ +50dB gain (150 Ohm source impedance)
Maximum Input Level:	-7 dBu
Frequency Response:	+0, -0.5 dB 20 Hz - 20 kHz, ref. 1 kHz
THD+N:	<.005%, 20 Hz - 20 kHz
Line Inputs:	(2) 1/4" TRS balanced or unbalanced
Input Impedance:	20 kOhm balanced, 10 kOhm unbalanced
Maximum Input Level:	+13 dBu
Frequency Response:	+0, -0.5 dB 20 Hz - 20 kHz, ref. 1kHz
THD+N:	<.009% A/D, 20 Hz - 20 kHz
Instrument Input:	(1) 1/4" mono jack
Input Impedance:	1 MOhm unbalanced
Maximum Input Level:	+8.5 dBu
Frequency Response:	+0, -1 dB 20 Hz - 20 kHz, ref. 1 kHz
THD+N:	<.0125% A/D
Line Outputs:	(2) 1/4" TRS balanced or unbalanced
Level:	+16 dBu maximum
Impedance:	1 KOhm Balanced, 500 Ohm Unbalanced
Headphone Output:	(1) 1/8" stereo jack 20 mW per channel at 50 Ohms
Sample Rate:	44.1 kHz or 48 kHz (determined by computer application)
Dynamic Range:	A/D (24 Bit) 100 dB typical, A-weighted, 20 Hz - 20 kHz D/A (24 Bit) 100 dB typical, A-weighted, 20 Hz - 20 kHz
A/D/A (24 Bit)	97 dB typical, A-weighted, 20 Hz - 20 kHz
Power Requirements:	USB powered
Dimensions:	6.7 x 6.5 x 1.5
Weight:	1.13 lbs.

Lexicon engineers are constantly working to improve the quality of our products. Specifications are therefore subject to change without notice.

Alpha Signal Routing Diagram



* Instrument Input
disables Line 1 input when
Instrument input has a cable
inserted into its jack.

** Line 2 Input
disables Mic input when
Line 2 input has a cable
inserted into its jack.

Lexicon®

Harman Music Group
8760 South Sandy Parkway | Sandy, Utah 84070 U.S.A.
Phone: 801-566-8800 | Fax: 801-566-7005

Alpha Desktop Recording Studio™
Questions or comments?
Email us at: customer@lexiconpro.com
or visit our World Wide Web home page at: www.lexiconpro.com